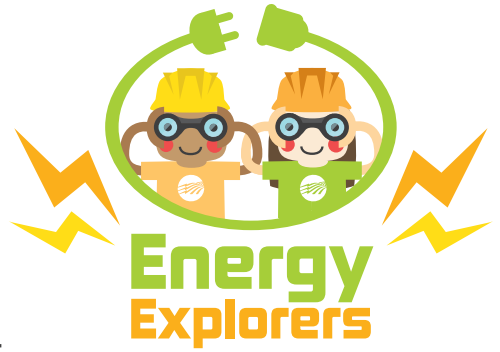


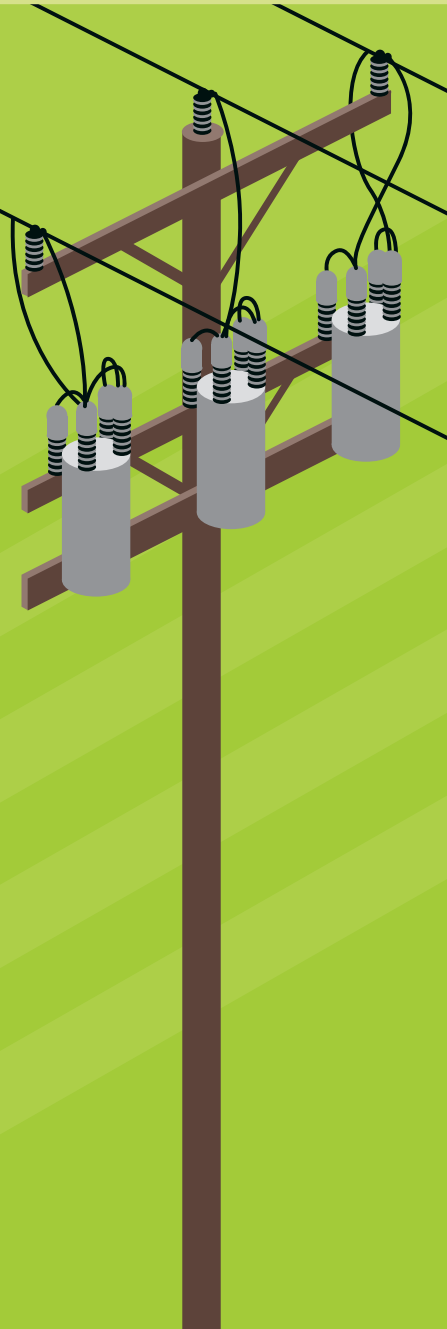
ELECTRICAL EQUIPMENT WORD SCRAMBLE



Electric co-ops use a variety of equipment to make sure you and your family receive reliable electricity. Can you unscramble the equipment terms below?

Use the provided clues for help, and double check your work in the answer key below.

- 1. ORNSTAMREFR** _____
These can look like large metal cans on top of utility poles or big green boxes on the ground. They are used to reduce the voltage of electricity, making it safe for use in your home.
- 2. OERPW NSLIE** _____
These can hang overhead or be placed underground. They carry electricity from where it's generated to homes and businesses in your community.
- 3. OUTASBSNTI** _____
This is an electrical facility that contains equipment for controlling the flow of electricity.
- 4. RCTLECIE ERMTE** _____
These devices are typically found outside the home and measure the amount of electricity you use.
- 5. CBUTKE KTURC** _____
Lineworkers use these types of vehicles to reach power lines and poles when making repairs and updates to the electrical system.



*Answer Key: 1. TRANSFORMER 2. POWER LINES 3. SUBSTATION
4. ELECTRIC METER 5. BUCKET TRUCK*