

# CURRENT NEWS

## What's Happening



**FEB. 11-12**

KFYR Agri-International



**APRIL 25**

North Dakota Career Tour  
application deadline



**JUNE 4**

Annual Meeting in Dickinson

Check out our newly redesigned website! The redesign features easy navigation for a seamless experience.

## In case you missed it...

### Youth invited to apply for the North Dakota Career Tour

If you've ever been curious about what powers your world, this is your chance to explore. From coal mines and power plants to wind turbines and electric cooperatives, you'll get hands-on experiences and hear directly from the experts who drive North Dakota's energy sector. Learn more and apply on our website, [www.roughriderelectric.com/career-tour](http://www.roughriderelectric.com/career-tour).

### Things you may not know about power restoration

As we continue through the cold, brisk winter we thought it would be a good time to shed light on our restoration process. In this month's Message from Operations learn more about the power restoration process.

### Join us at the KFYP Agri-International

Join us Feb. 11-12 at the Bismarck Event Center for the KFYP Agri-International trade show.

**Read these stories and more in this month's issue of *North Dakota Living*.**

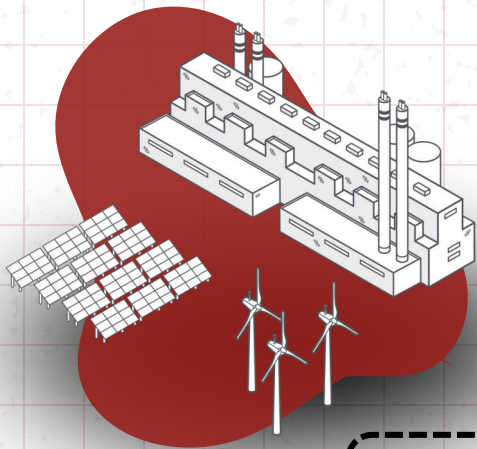


Your Touchstone Energy® Partner 

# CRITICAL CONNECTIONS



Here's how electricity gets to you ...



**1**

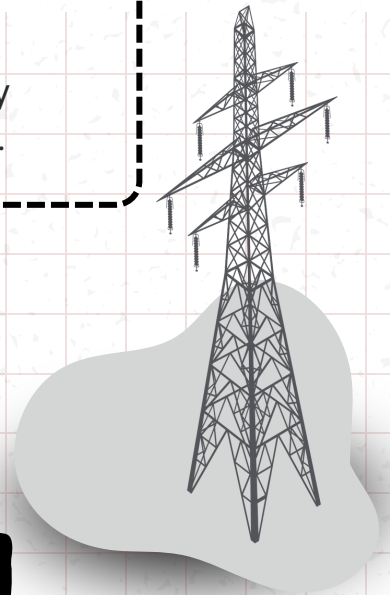
## GENERATION

Power plants generate electricity from a variety of energy sources.

**2**

## TRANSMISSION

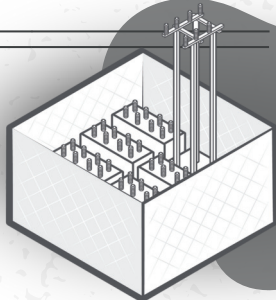
High-voltage electricity travels from power plants over long distances through transmission lines.



**3**

## SUBSTATION

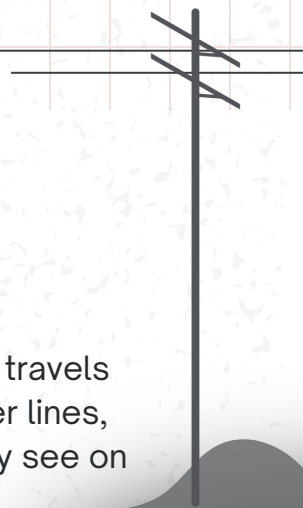
Electricity travels through a substation where the voltage is lowered.



**4**

## DISTRIBUTION

Lower-voltage electricity travels through distribution power lines, like the ones you typically see on the side of the road.



**5**

## TRANSFORMER

A transformer located on the ground or a utility pole reduces the electricity voltage a final time.



**6**

## LAST STOP

Electricity arrives at your home, school or business and is ready for use.

